



REGIONAL SPECIALISED METEOROLOGICAL CENTRE-TROPICAL CYCLONES, NEW DELHI
SPECIAL TROPICAL WEATHER OUTLOOK

DEMS-RSMC SPECIAL TROPICAL CYCLONES NEW DELHI DATED 26.12.2022

SPECIAL TROPICAL WEATHER OUTLOOK FOR NORTH INDIAN OCEAN (THE BAY OF BENGAL AND THE ARABIAN SEA) VALID FOR NEXT 120 HOURS ISSUED AT 0600 UTC OF 26.12.2022 BASED ON 0300 UTC OF 26.12.2022.

BAY OF BENGAL:

SCATTERED TO BROKEN LOW AND MEDIUM CLOUDS WITH EMBEDDED MODERATE TO INTENSE CONVECTION LAY OVER SOUTHWEST BAY OF BENGAL AND WEAK TO MODERATE CONVECTION LAY OVER CENTRAL BAY OF BENGAL, SOUTHEAST BAY OF BENGAL AND ANDAMAN SEA.

PROBABILITY OF CYCLOGENESIS (FORMATION OF DEPRESSION) DURING NEXT 120 HRS:

24 HOURS	24-48 HOURS	48-72 HOURS	72-96 HOURS	96-120 HOURS
NIL	NIL	NIL	NIL	NIL

ARABIAN SEA:

YESTERDAY'S WELL MARKED LOW PRESSURE AREA OVER INTERIOR SRI LANKA EMERGED INTO COMORIN AREA & NEIGHBOURHOOD COAST AT 0000 UTC OF TODAY, THE 26TH DECEMBER 2022. IT LAY A LOW PRESSURE ARE OVER THE SAME REGION AT 0300 UTC OF TODAY THE 26TH DECEMBER, 2022. IT IS LIKELY TO MOVE WEST-NORTHWESTWARDS TOWARDS SOUTHEAST ARABIAN SEA.

ASSOCIATED SCATTERED TO BROKEN LOW AND MEDIUM CLOUDS WITH EMBEDDED INTENSE TO VERY INTENSE CONVECTION LAY OVER COMORIN AREA, NORTH SRI LANKA, PALK STR AND GULF OF MANNAR. MINIMUM CLOUD TOP TEMPERATURE IS MINUS 93 DEG C.

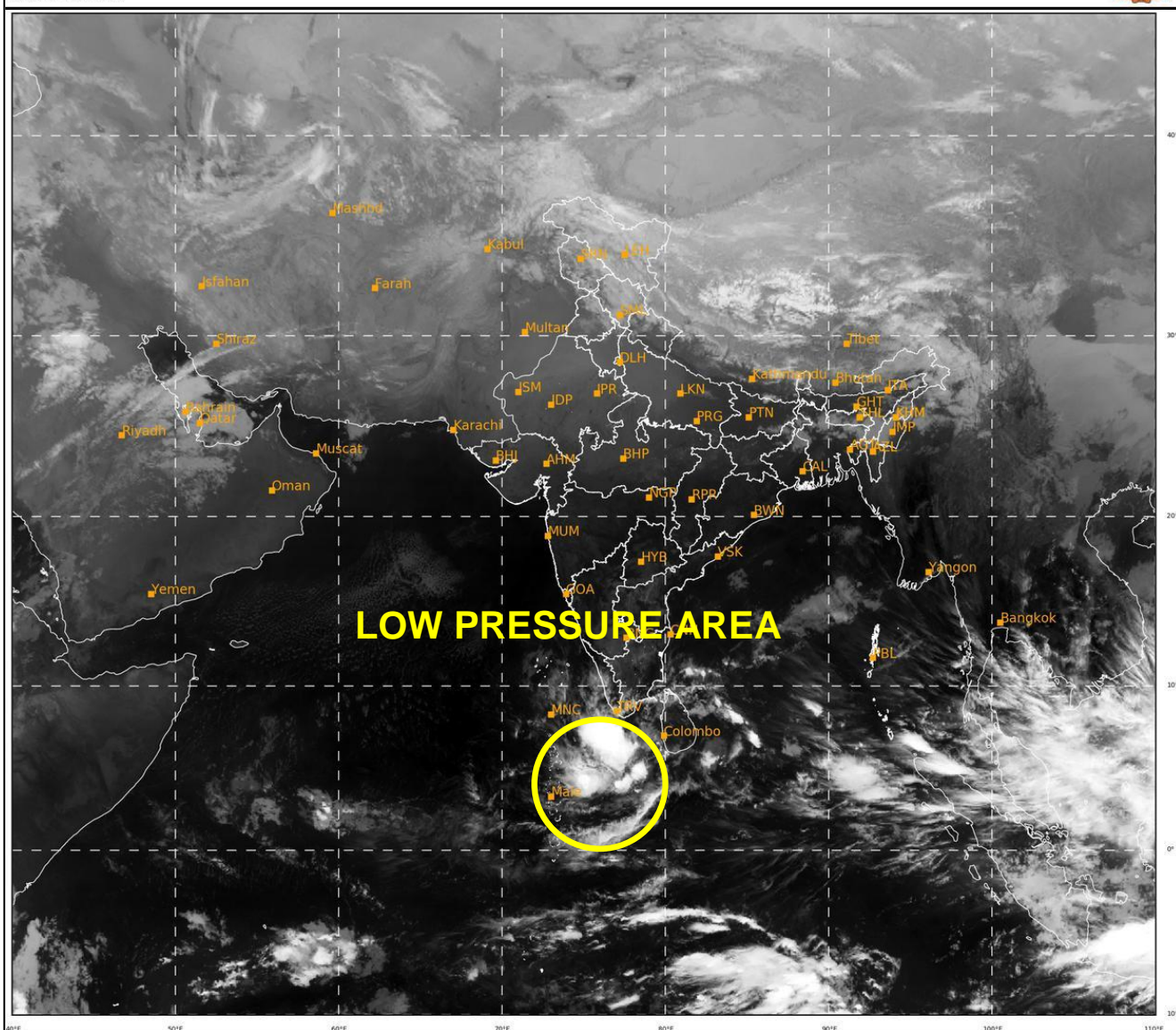
PROBABILITY OF CYCLOGENESIS (FORMATION OF DEPRESSION) DURING NEXT 120 HRS:

24 HOURS	24-48 HOURS	48-72 HOURS	72-96 HOURS	96-120 HOURS
NIL	NIL	NIL	NIL	NIL

REMARKS: NIL

SAT : INSAT-3D IMG
 IMG_TIR1 10.8 um
 L1C Mercator

26-12-2022/(0300 to 0327) GMT
 26-12-2022/(0830 to 0857) IST



521

940

IMD, DELHI

Cloud distribution: (a) Isolated: <25%, Scattered:25-50%, Broken: 51-75%, Solid:>75%, Convection Intensity: (a) Weak: Cloud Top Temperature (CTT) >-25°C, (b) Moderate: CTT: - 25°C to -40°C, (c) Intense: CTT: - 41°C to -70°C and (d) Very Intense: : Less than -70°C
 PROBABILITY OF CYCLOGENESIS (FORMATION OF DEPRESSION): NIL: 0%, LOW: 1-33%, MODERATE: 34-66% AND HIGH: 67-100%
 This is a guidance Bulletin for WMO/ESCAP Panel Member countries. Visit respective National websites for Country specific Bulletins